



Catch Basin Traps

Syracuse Castings manufactures four types of Catch Basin Traps:

1. Standard Type

- a. Cast Iron for pipe sizes to 21"
- b. Fabricated Aluminum for pipe sizes to 21" and over
- c. Galvanized Fabricated Steel for larger pipe sizes

2. Enclosed Type

3. Vapor Tight Type

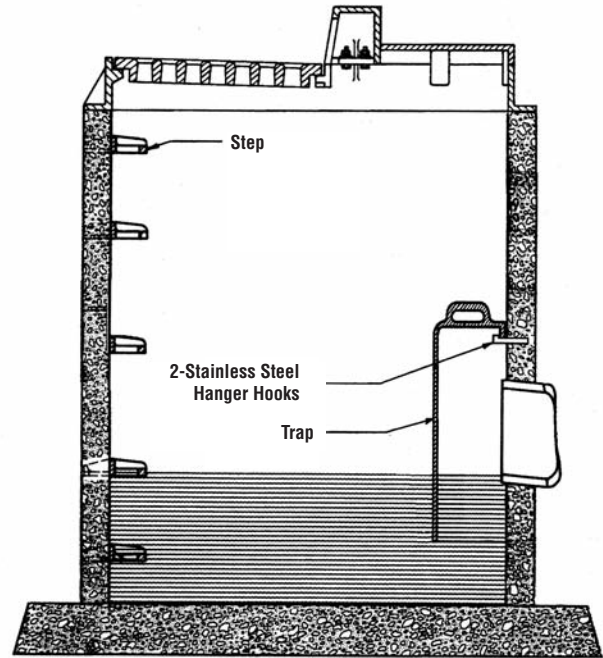
Also available:

4. The SNOOT Oil-Water-Debris Separator (See page 35.)

The **Standard Catch Basin Trap** consists of two component parts: the trap and the stainless steel hanger hooks (2). The Standard Catch Basin Trap is installed to prevent floating debris from entering and clogging the sewer line. The trap also creates an effective water seal from sewer gases.

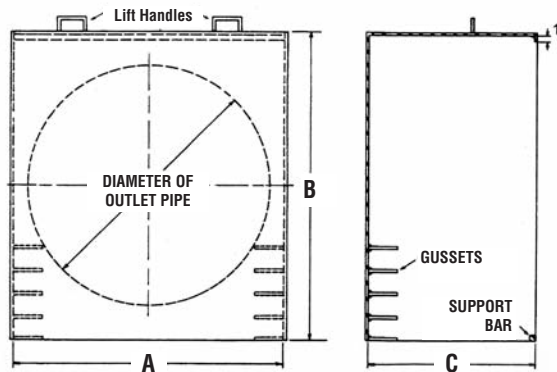
The **Enclosed Catch Basin Trap** mounts directly into the outlet pipe and when properly caulked can be made gas-tight. This type of trap is also supplied with a cover for inspection or cleanout.

The **Vapor Tight Trap** is gas-tight and principally specified at air-ports. By design this trap reduces the possibility of any infiltration of gases or vapors into the drainage system.



Typical Catch Basin

Standard Fabricated Aluminum Traps



Pipe Sizes 21" to 54"

Material: 1/8" Aluminum Plate
1/4" Galvanized Fabricated Steel Plate for 48" & 54" sizes
All Traps supplied with 1/2" x 1/2" x 6" stainless steel hooks.
Wall plates furnished upon request.

Please contact our office for availability of elliptical pipe size traps.

Pattern Number	A	B	C	Pipe Size
25690214	27	33	12	21
25690244	30	36	15	24
25690274	33	39	18	27
25690304	36	42	20	30
25690364	42	48	25	36
25690424	48	54	29	42
25690484	54	60	34	48
25690544	60	66	38	54