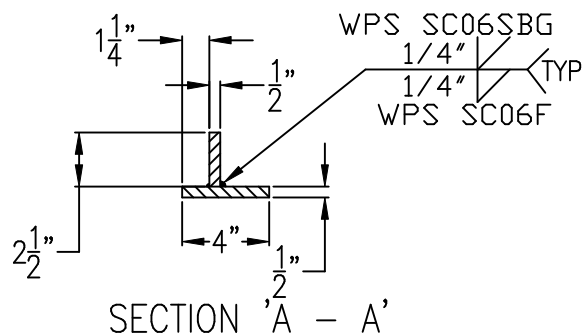


NOTES:

- 1.) FRAME MATERIAL SHALL BE STRUCTURAL STEEL CONFORMING TO A.S.T.M. A709 GRADE 36.
- 2.) STRUCTURAL STEEL FRAMES ARE WELDED IN ACCORDANCE WITH THE REQUIREMENTS OF PULICATION 408, SECTION 1105.03(m).
- 3.) FRAME TO BE PAINTED WITH ONE COAT BLACK BITUMINOUS PAINT IN ACCORDANCE WITH PUBLICATION 408, SECTION 605.2(f).
- 4.) AS AN ALTERNATE TO BITUMINOUS PAINT, GALVANIZE FRAME IN ACCORDANCE WITH PUBLICATION 408, SECTION 1105.02(s).



THIS DOCUMENT IS THE PROPRIETARY PROPERTY OF SYRACUSE CASTINGS. IT HAS BEEN FURNISHED UPON THE CONDITION THAT IT SHALL NOT BE RELEASED, DUPLICATED, USED, OR DISCLOSED IN WHOLE OR IN PART FOR ANY PURPOSE WITHOUT THE EXPRESS WRITTEN PERMISSION OF SYRACUSE CASTINGS AND SHALL BE CONSIDERED CONFIDENTIAL INFORMATION.

PENNSYLVANIA DOT  
TYPE M INLET FRAME  
PER RC-45M SHEET 15

DRAWING # 081100-M

FILE # 3141STL

Drawn By: R.E.S.

DATE: 07-18-97

Revised By: ARO

Revised: 08/06/10



**Syracuse Castings**

*Better By Design*

P.O. Box 1821  
6177 South Bay Rd.  
Cicero, N.Y. 13039

Phone # 315-699-2601 Fax # 315-699-2982 www.syracast.com