

- NOTES:
- 1.) ALL WELDING SHALL BE IN CONFORMANCE WITH THE REQUIREMENTS OF PUBLICATION 408, SECTION 1105.03(m).
 - 2.) ALL BEARING BARS AND PERIMETER BARS SHALL BE ASTM A572 GRADE 50 STEEL. ALL CROSS BARS SHALL BE A36 STEEL.
 - 3.) ALL CROSS BARS SHALL BE LOCATED FLUSH ALONG THE TOP SURFACE OF THE GRATE.
 - 4.) COAT GRATES WITH AN APPROVED BITUMINOUS PAINT, IN ACCORDANCE WITH PUBLICATION 408, SECTION 605.2(d), IN THE SHOP OF FIELD PRIOR TO INSTALLATION.
 - 5.) AS AN ALTERNATE TO BITUMINOUS PAINT, GALVANIZE GRATES IN ACCORDANCE WITH PUBLICATION 408, SECTION 1105.02(s).

TYPICAL EACH JOINT
(132 JOINTS TYPICAL)

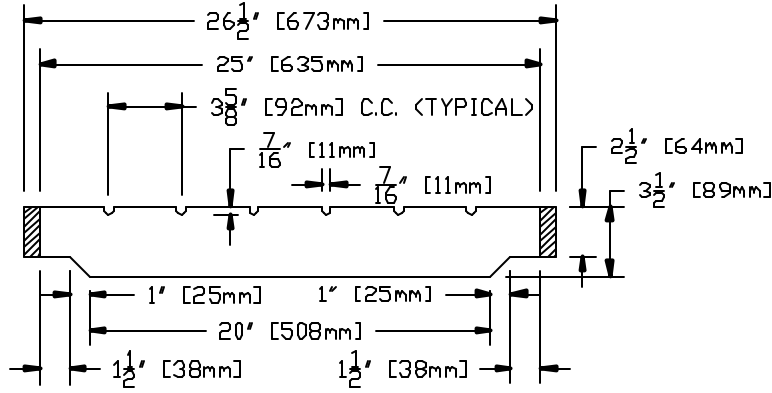
3/8" [10mm] x 3-1/2" [89mm]
BEARING BARS (22 TYPICAL)

3/8" [10mm] ROUND
CROSS BARS
(6 TYPICAL)

3/4" [19mm] x
2-1/2" [64mm]
PERIMETER BARS
(TYPICAL ALL SIDES)

SECTION B - B

SECTION A - A



THIS DOCUMENT IS THE PROPRIETARY PROPERTY OF SYRACUSE CASTINGS. IT HAS BEEN FURNISHED UPON THE CONDITION THAT IT SHALL NOT BE RELEASED, DUPLICATED, USED, OR DISCLOSED IN WHOLE OR IN PART FOR ANY PURPOSE WITHOUT THE EXPRESS WRITTEN PERMISSION OF SYRACUSE CASTINGS AND SHALL BE CONSIDERED CONFIDENTIAL INFORMATION.

PENNSYLVANIA DOT STRUCTURAL STEEL
BIKE SAFE GRATE

DRAWING # 071708-A

FILE # PENNDOT BK4

Drawn By: ARO DATE: 07/17/08 Revised By: ARO Revised: 06/12/09



Syracuse Castings
Better By Design

P.O. Box 1821
6177 South Bay Rd.
Cicero, N.Y. 13039

Phone # 315-699-2601 Fax # 315-699-2982 www.syracast.com