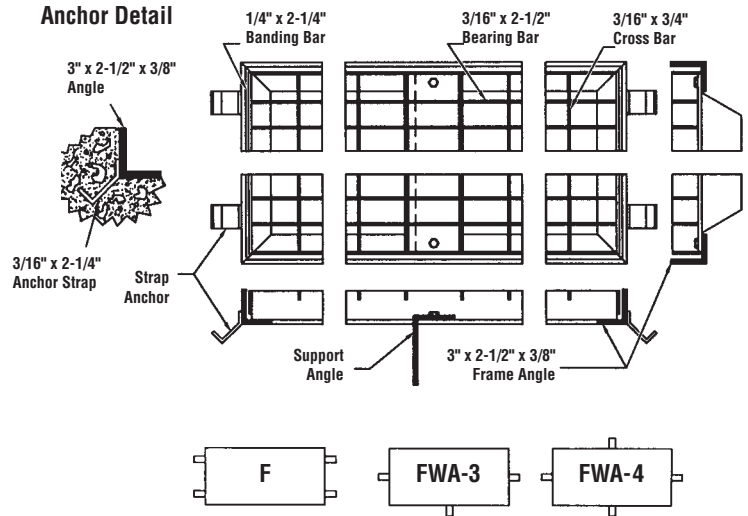




State of New York Department of Transportation
Rectangular Type Frame & Grate



Pattern Number 1-22 RECT

Note: Rate of Flow charts on page 42

No.	Frame Outside Dimensions	Frame Clear Opening	Approx. Weight Lbs.	Grate Outside Dimensions	655-6 Weight	Payment Area in Sq. Ft.	Payment Area in Sq. M.
1	1'-11 ¹⁵ / ₁₆ " x 2'-3 ¹ / ₂ "	1'-6 ¹⁵ / ₁₆ " x 1'-10 ¹ / ₂ "	54#	1'-10 ¹¹ / ₁₆ " x 2'-2 ¹ / ₂ "	79#	4.3	0.39948
2	1'-11 ¹⁵ / ₁₆ " x 2'-8 ¹ / ₂ "	1'-6 ¹⁵ / ₁₆ " x 2'-3 ¹ / ₂ "	65#	1'-10 ¹¹ / ₁₆ " x 2'-7 ¹ / ₂ "	88#	5.1	0.47381
3	1'-11 ¹⁵ / ₁₆ " x 3'-1 ¹ / ₂ "	1'-6 ¹⁵ / ₁₆ " x 2'-8 ¹ / ₂ "	54#	1'-10 ¹¹ / ₁₆ " x 3'-0 ¹ / ₂ "	94#	5.9	0.54813
4	1'-11 ¹⁵ / ₁₆ " x 3'-6 ¹ / ₂ "	1'-6 ¹⁵ / ₁₆ " x 3'-1 ¹ / ₂ "	71#	1'-10 ¹¹ / ₁₆ " x 3'-5 ¹ / ₂ "	109#	6.7	0.62245
5	1'-11 ¹⁵ / ₁₆ " x 3'-11 ¹ / ₂ "	1'-6 ¹⁵ / ₁₆ " x 3'-6 ¹ / ₂ "	76#	1'-10 ¹¹ / ₁₆ " x 3'-10 ¹ / ₂ "	124#	7.5	0.69678
6	2'-2 ⁷ / ₁₆ " x 2'-3 ¹ / ₂ "	1'-9 ⁷ / ₁₆ " x 1'-10 ¹ / ₂ "	57#	2'-1 ³ / ₁₆ " x 2'-2 ¹ / ₂ "	91#	4.8	0.44594
7	2'-2 ⁷ / ₁₆ " x 3'-1 ¹ / ₂ "	1'-9 ⁷ / ₁₆ " x 2'-8 ¹ / ₂ "	68#	2'-1 ³ / ₁₆ " x 3'-0 ¹ / ₂ "	108#	6.6	0.61316
8	2'-2 ⁷ / ₁₆ " x 3'-11 ¹ / ₂ "	1'-9 ⁷ / ₁₆ " x 3'-6 ¹ / ₂ "	79#	2'-1 ³ / ₁₆ " x 3'-10 ¹ / ₂ "	165#	8.3	0.77110
9	2'-4 ¹⁵ / ₁₆ " x 2'-3 ¹ / ₂ "	1'-11 ¹⁵ / ₁₆ " x 1'-10 ¹ / ₂ "	60#	2'-3 ¹¹ / ₁₆ " x 2'-2 ¹ / ₂ "	99#	5.2	0.48310
10	2'-4 ¹⁵ / ₁₆ " x 2'-8 ¹ / ₂ "	1'-11 ¹⁵ / ₁₆ " x 2'-3 ¹ / ₂ "	65#	2'-3 ¹¹ / ₁₆ " x 2'-7 ¹ / ₂ "	109#	6.2	0.57600
11	2'-4 ¹⁵ / ₁₆ " x 3'-1 ¹ / ₂ "	1'-11 ¹⁵ / ₁₆ " x 2'-8 ¹ / ₂ "	71#	2'-3 ¹¹ / ₁₆ " x 3'-0 ¹ / ₂ "	117#	7.2	0.66890
12	2'-4 ¹⁵ / ₁₆ " x 3'-6 ¹ / ₂ "	1'-11 ¹⁵ / ₁₆ " x 3'-1 ¹ / ₂ "	76#	2'-3 ¹¹ / ₁₆ " x 3'-5 ¹ / ₂ "	128#	8.2	0.76181
13	2'-4 ¹⁵ / ₁₆ " x 3'-11 ¹ / ₂ "	1'-11 ¹⁵ / ₁₆ " x 3'-6 ¹ / ₂ "	82#	2'-3 ¹¹ / ₁₆ " x 3'-10 ¹ / ₂ "	180#	9.2	0.85471
14	2'-7 ⁷ / ₁₆ " x 2'-8 ¹ / ₂ "	2'-2 ⁷ / ₁₆ " x 2'-3 ¹ / ₂ "	68#	2'-6 ³ / ₁₆ " x 2'-7 ¹ / ₂ "	121#	6.8	0.63174
15	2'-7 ⁷ / ₁₆ " x 3'-1 ¹ / ₂ "	2'-2 ⁷ / ₁₆ " x 2'-8 ¹ / ₂ "	74#	2'-6 ³ / ₁₆ " x 3'-0 ¹ / ₂ "	130#	7.8	0.72465
16	2'-7 ⁷ / ₁₆ " x 3'-11 ¹ / ₂ "	2'-2 ⁷ / ₁₆ " x 3'-6 ¹ / ₂ "	85#	2'-6 ³ / ₁₆ " x 3'-10 ¹ / ₂ "	201#	10.0	0.92903
17	2'-9 ¹⁵ / ₁₆ " x 3'-1 ¹ / ₂ "	2'-4 ¹⁵ / ₁₆ " x 2'-8 ¹ / ₂ "	76#	2'-8 ¹¹ / ₁₆ " x 3'-0 ¹ / ₂ "	145#	8.5	0.78968
18	3'-0 ⁷ / ₁₆ " x 3'-1 ¹ / ₂ "	2'-7 ⁷ / ₁₆ " x 2'-8 ¹ / ₂ "	79#	2'-11 ³ / ₁₆ " x 3'-0 ¹ / ₂ "	155#	9.1	0.84542
19	3'-2 ¹⁵ / ₁₆ " x 2'-3 ¹ / ₂ "	2'-9 ¹⁵ / ₁₆ " x 1'-10 ¹ / ₂ "	71#	3'-1 ¹¹ / ₁₆ " x 2'-2 ¹ / ₂ "	133#	7.1	0.65961
20	3'-2 ¹⁵ / ₁₆ " x 2'-8 ¹ / ₂ "	2'-9 ¹⁵ / ₁₆ " x 2'-3 ¹ / ₂ "	76#	3'-1 ¹¹ / ₁₆ " x 2'-7 ¹ / ₂ "	146#	8.4	0.78039
21	3'-2 ¹⁵ / ₁₆ " x 3'-1 ¹ / ₂ "	2'-9 ¹⁵ / ₁₆ " x 2'-8 ¹ / ₂ "	82#	3'-1 ¹¹ / ₁₆ " x 3'-0 ¹ / ₂ "	171#	9.7	0.90116
22	3'-2 ¹⁵ / ₁₆ " x 3'-6 ¹ / ₂ "	2'-9 ¹⁵ / ₁₆ " x 3'-1 ¹ / ₂ "	87#	3'-1 ¹¹ / ₁₆ " x 3'-5 ¹ / ₂ "	185#	11.1	1.03123