

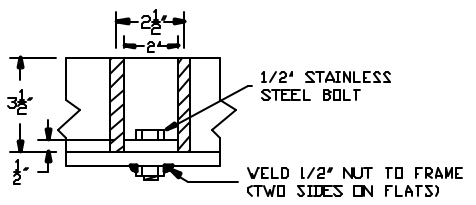
SECTION B - B



SECTION A - A

NOTES:

- 1.) MATERIAL SHALL CONFORM TO A.S.T.M. A36 [A36M].
- 2.) COMPLETE UNIT SHALL BE HOT DIP GALVANIZED PER A.S.T.M. 123.
- 3.) PAYMENT AREA = .81 SQ.M. / 8.7 SQ.FT.



FABRICATED GALVANIZED STEEL #12 PCB FRAME (#12FPCB)			
DRAWING # #12 FPCB			
Drawn By: ARO	DATE: 06/28/00	Revised By: ARO	Revised: 07/10/00
	SYRACUSE CASTINGS SALES CORP.		
	P.O. Box 1821 / 6177 South Bay Rd.		
	Cicero, N.Y. 13039		
315-699-2601 Fax # 315-699-2982			www.syracast.com