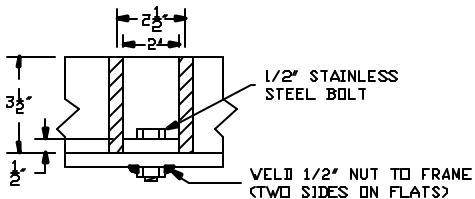


NOTES:

- 1.) MATERIAL SHALL CONFORM TO A.S.T.M. A36 [A36M].
- 2.) COMPLETE UNIT SHALL BE HOT DIP GALVANIZED PER A.S.T.M. 123.
- 3.) PAYMENT AREA = .81 SQ.M. / 8.7 SQ.FT.



FABRICATED GALVANIZED STEEL  
#11 PCB FRAME (#11FPCB)

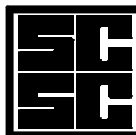
DRAWING # #11 FPCB

Drawn By: ARO

DATE: 06/28/00

Revised By: ARO

Revised: 07/10/00



SYRACUSE CASTINGS SALES CORP.  
P.O. Box 1821 / 6177 South Bay Rd.  
Cicero, N.Y. 13039  
315-699-2601 Fax # 315-699-2982  
www.syracast.com