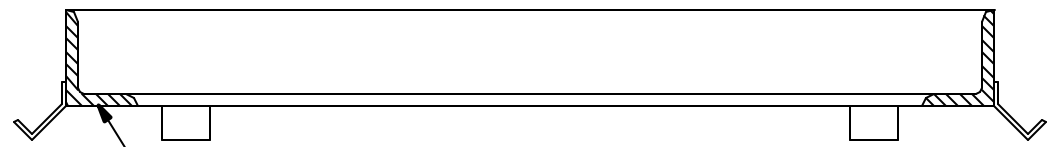
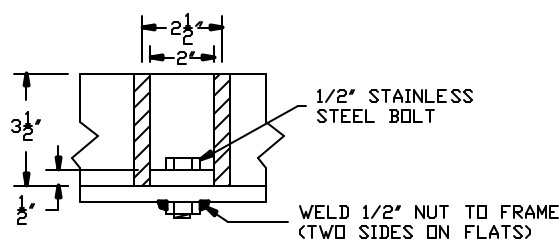


SECTION B - B



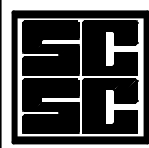
4" x 3" x 1/2" ANGLE
NOTES: SECTION A - A

- 1.) MATERIAL SHALL CONFORM TO A.S.T.M. A36 [A36M].
- 2.) COMPLETE UNIT SHALL BE HOT DIP GALVANIZED PER A.S.T.M. 123.
- 3.) PAYMENT AREA = .81 SQ.M. / 8.7 SQ.FT.



FABRICATED GALVANIZED STEEL
#10 PCB FRAME (#10FPCB)

DRAWING # #10 FPCB
 Drawn By: ARO DATE: 06/28/00 Revised By: ARO Revised: 07/10/00



SYRACUSE CASTINGS SALES CORP.
 P.O. Box 1821 / 6177 South Bay Rd.
 Cicero, N.Y. 13039
 315-699-2601 Fax # 315-699-2982
 www.syracast.com