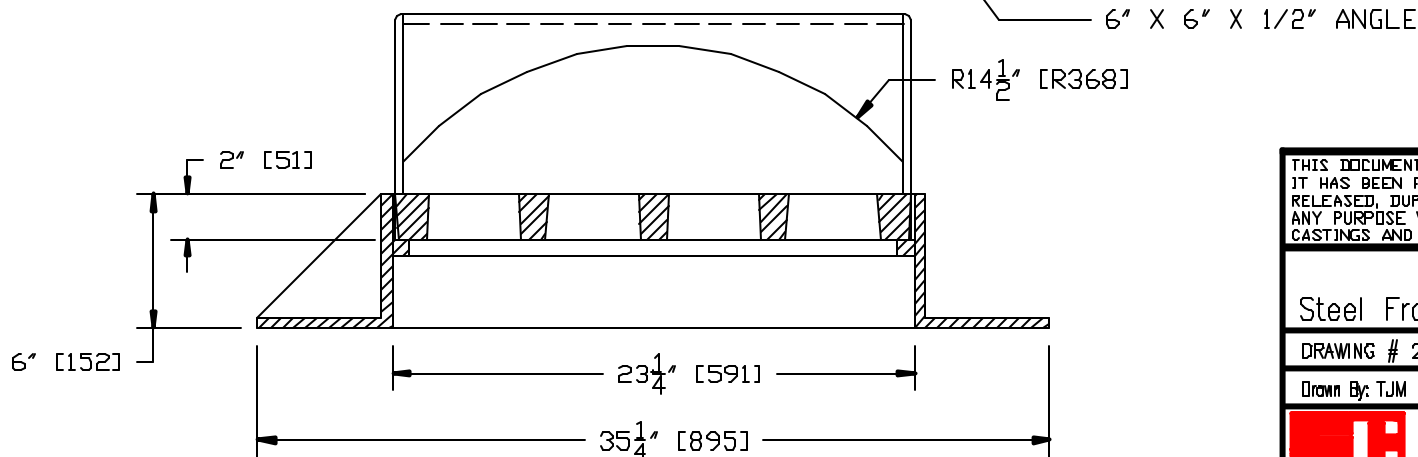


NOTES:

- 1.) MATERIAL FOR GRATE SHALL BE GRAY CAST IRON CONFORMING TO A.S.T.M. A48 (LATEST REVISION) CLASS 30B.
- 2.) MATERIAL FOR FRAME & CURB PIECE SHALL BE HOT ROLLED STEEL. FRAME SHALL BE PAINTED WITH ONE COAT BLACK BITUMINOUS PAINT.
- 3.) UNITS DESIGNED HEAVY DUTY FOR A.A.S.H.T.O. HS20-44 WHEEL LOADS.



SECTION A - A

THIS DOCUMENT IS THE PROPRIETARY PROPERTY OF SYRACUSE CASTINGS. IT HAS BEEN FURNISHED UPON THE CONDITION THAT IT SHALL NOT BE RELEASED, DUPLICATED, USED, OR DISCLOSED IN WHOLE OR IN PART FOR ANY PURPOSE WITHOUT THE EXPRESS WRITTEN PERMISSION OF SYRACUSE CASTINGS AND SHALL BE CONSIDERED CONFIDENTIAL INFORMATION

Pattern 2057
Steel Frame, Cast Iron Grate & Steel Curb

DRAWING # 2057STLF-2057522C-2057CURB

Drawn By: TJM

DATE: 7/27/09

Revised By:

Revised:



Syracuse Castings

Better By Design

P.O. Box 1821
6177 South Bay Rd.
Cicero, N.Y. 13039

Phone # 315-699-2601 Fax # 315-699-2982 www.syracast.com